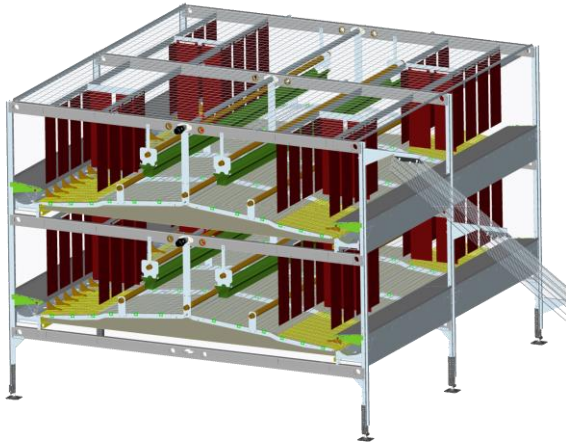


Originals are always better than Imitations!
**The Combi II by Farmer Automatic is the original,
three in one system. Cage Free, Enrichable and
Enriched**



The Combi II is a highly flexible system capable of performing in all the changing regulations. The Combi II system is like having three systems in one. It easily converts from Enrichable, Enriched to Cage Free. This system will fit in any existing building providing maximum bird numbers. Each level is equipped with feed, water, perches, nest and manure removal to guarantee easy access and maximum bird comfort. All nest are located close to the egg belts along with the Patented Eggsaver® ensures gentle handling to maximize egg quality and promotes higher productivity in weaker egg shell situations. The Combi II is capable of being twelve tiers tall. The compact design ensures good visibility for inspecting birds.

Overhead Manure Drying can be provided as an additional profit center. OHMD utilizes the same manure belts and minimum house ventilation to dry manure with very little additional operating cost. Dry manure provides an additional profit center which can be beneficial to all businesses.

Farmer Automatic of America, Inc.
David Leavell
574-857-3116
dleavell@farmerautomatic.com